

WAYLINE

WAYLINE

WELCOME

6711, 6721 + 6731 Columbia Gateway Drive | Columbia, MD
wayline.copt.com

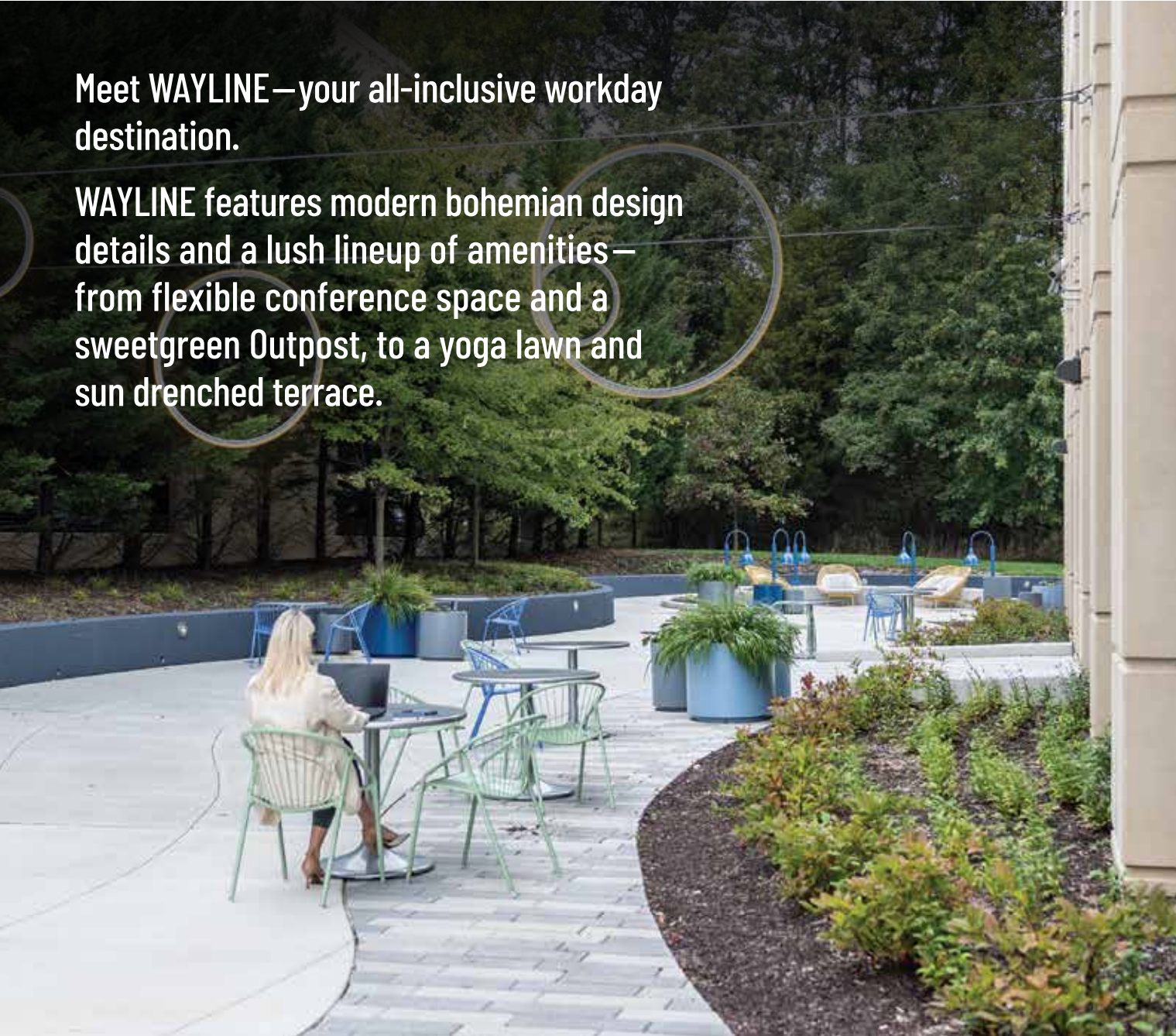


COPT DEFENSE
PROPERTIES

WORKDAYS YOUR WAY

Meet WAYLINE—your all-inclusive workday destination.

WAYLINE features modern bohemian design details and a lush lineup of amenities— from flexible conference space and a sweetgreen Outpost, to a yoga lawn and sun drenched terrace.



COLUMBIA GATEWAY: STRATEGIC LOCATION

Situated Between Baltimore + Washington, DC
Directly Adjacent to I-95 | 7 Miles to Fort Meade

Annapolis

25 minutes

Inner Harbor

16 minutes

Bethesda

30 minutes

Johns Hopkins APL

12 minutes

BWI Airport

12 minutes

The Pentagon

40 minutes

College Park

25 minutes

Savage
MARC Station

10 minutes

Downtown
Columbia

10 minutes

Towson

35 minutes

Fort Meade

15 minutes

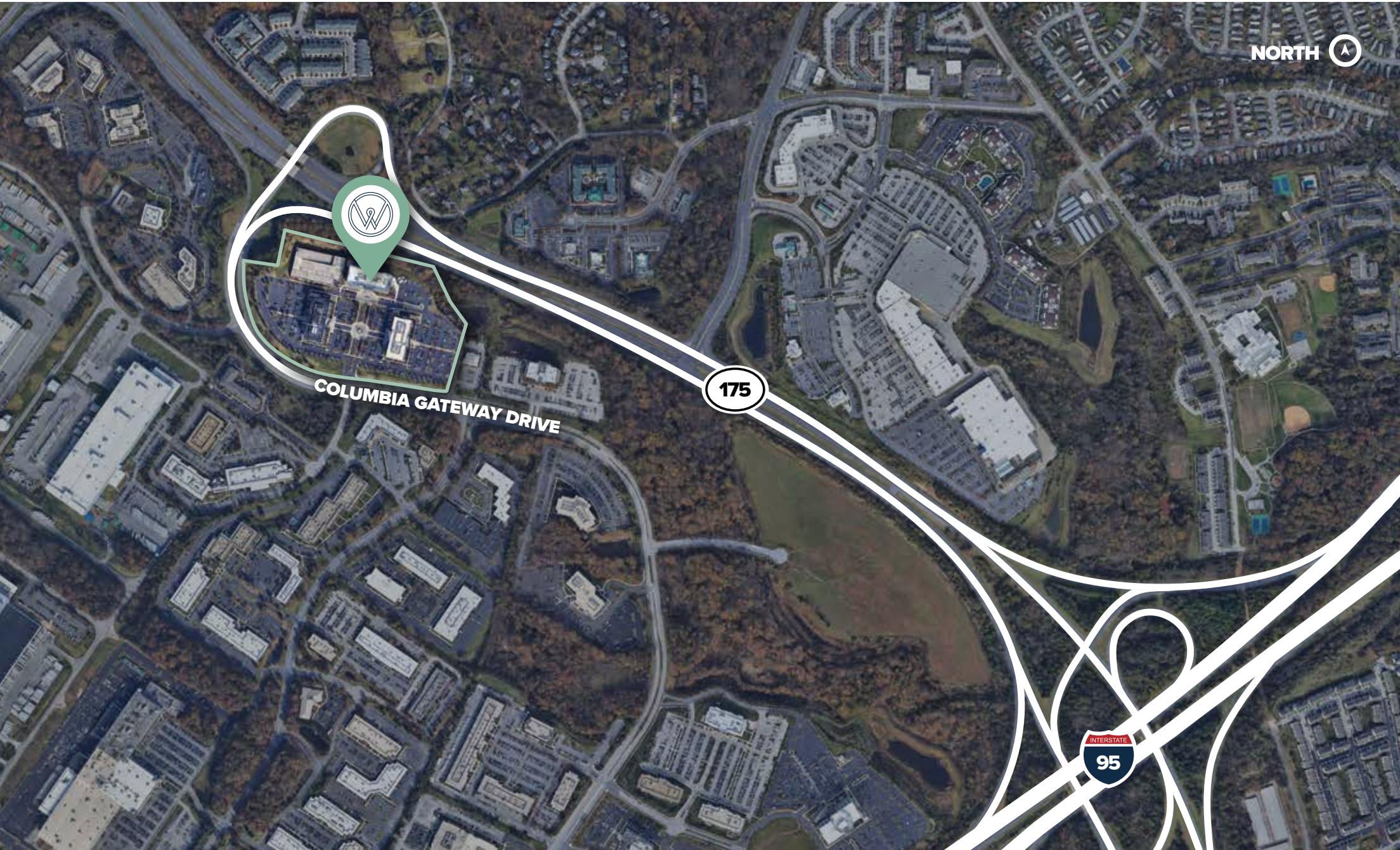
Frederick

45 minutes



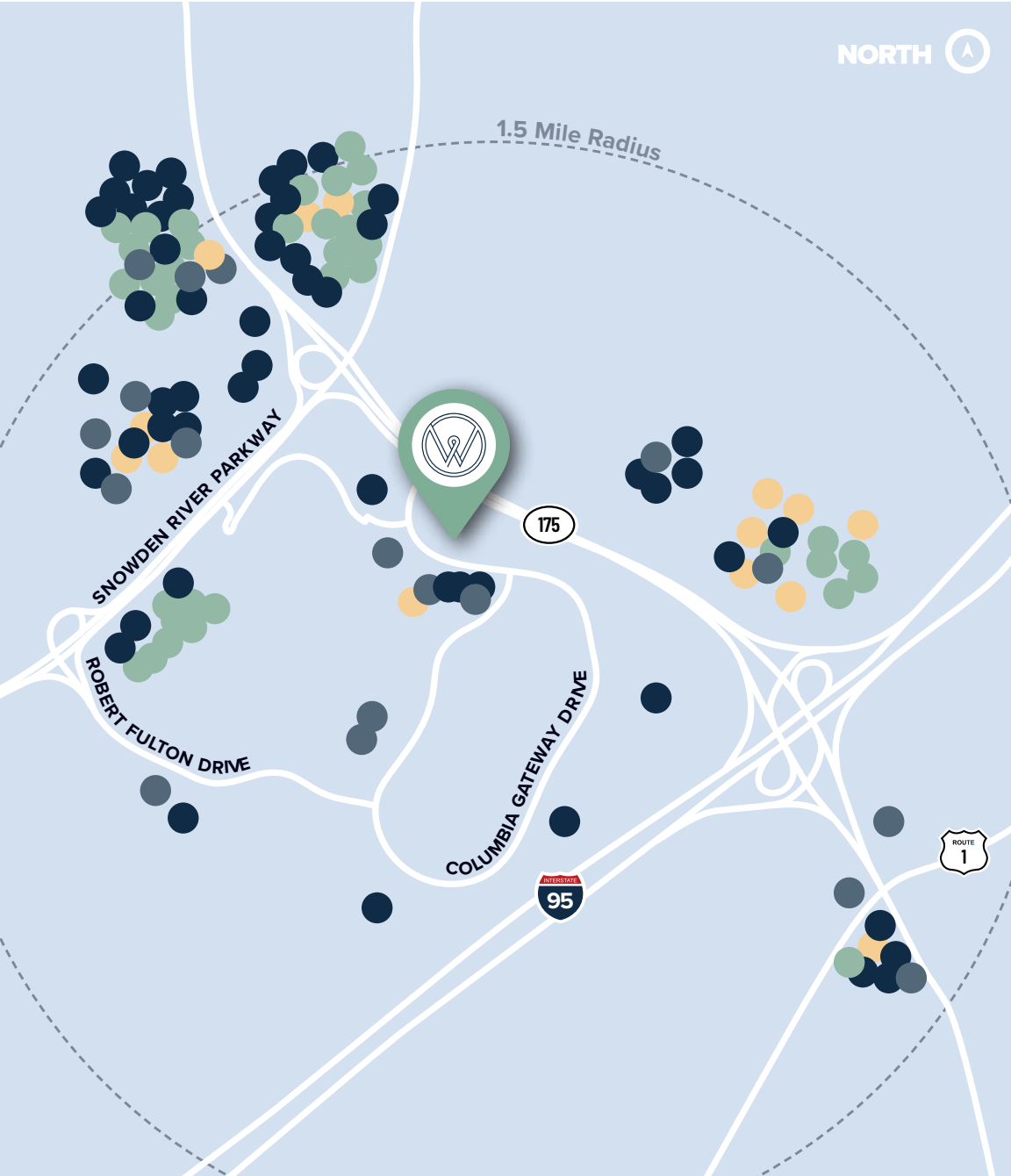
IMMEDIATE ACCESS TO I-95

Located Within 1 Mile of I-95 Entrance + Exit Ramps



SURROUNDING AMENITIES

70 Restaurants | 7 Hotels | 1.5 Mile Radius



80+
All Within
1.5 Mile
Radius

RESTAURANTS / FAST CASUAL

- Abby's Gourmet Deli
- AIDA Bistro
- Bertucci's
- Bibi Cafeteria
- BJ's Restaurant & Brewhouse
- Bob Evans
- Buffalo Wild Wings
- BurgerFi
- CAVA
- Chick-Fil-A
- Chipotle
- Cinco de Mayo
- Columbia Ale House
- Dunkin'
- Famous Dave's
- First Watch Café
- Five Guys
- Flavors of India
- Frisco Tap House
- Glenwoods
- The Greene Turtle
- IHOP
- Jae's Deli
- Jerry's Subs & Pizza
- Jersey Mike's
- Jimmy John's
- La Madeleine Bakery & Café
- Long Horn Steakhouse
- Maiwand Kabob
- Mango Grove
- McDonald's
- Mission BBQ
- Nalley Fresh
- Neo Pizza & Taphouse
- Noodles & Co.
- Nottinghams Tavern
- Olive Garden
- Oracle Café
- Panda Express
- Panera Bread
- Potbelly Sandwich
- Qdoba
- Quickway Hibachi
- Red Lobster
- Red Robin
- Roggenart Bakery
- Rudy's Mediterranean Grill

- Silver Diner
- Smoothie King
- Starbucks
- Subway
- Sushi King
- Squisitos
- Texas Roadhouse
- THB Bagerly + Deli
- TGI Fridays
- Vegan Soul Bakery
- Wendys

GROCERY + BANKS

- ALDI
- Bank of America
- BB&T
- Capital Bank
- Capital One Bank
- The Columbia Bank
- Costco
- MOM's Organic Market
- M&T Bank
- PNC Bank
- Trader Joe's
- Wegmans
- Wells Fargo Bank

SHOPPING

- Advance Auto Parts
- Ashley Furniture
- AT&T
- Auto Zone
- Bed Bath & Beyond
- Best Buy
- BJ's
- Big Lots
- Bob's Discount Furniture
- Carter's
- Destination XL
- DICK'S Sporting Goods
- DSW
- Ethan Allen
- Game Stop
- Golf Galaxy
- Haverty's
- Hobby Lobby
- Home Depot

- HomeGoods
- Jo-Ann Fabric
- Lane Bryant
- Lowe's Home Improvement
- Marshalls
- Michaels
- Nordstrom Rack
- Old Navy
- Ollie's Bargain Outlet
- Party City
- PETCO
- PetSmart
- REI
- Road Runner Sports
- Ross Dress for Less
- Staples
- Target
- Ulta
- Verizon
- Walmart

OTHER

- Backstage Dance Studio
- Comfort Inn & Suites
- Enterprise
- Extended Stay America
- Fedex Office
- Hand & Stone Massage and Facial Spa
- Holiday Inn
- Homewood Suites
- KinderCare
- Krav Maga
- Life Time Fitness
- Maryland MVA Express
- Massage Envy
- Movement
- MyEyeDr
- My Gym
- Orangetheory Fitness
- Planet Fitness
- Sofive
- Stumpy's Hatchet House
- Top Tier Fitness Center
- United Way Family Center
- Xfinity

COLUMBIA GATEWAY AERIAL VIEW

2.5M SF | 30 Buildings | 2 Development Sites (290,000+ SF)



WAYLINE CAMPUS

3 Buildings | 390,100 SF



NORTH 

basketball

fitness center

the alley

food trucks

yoga lawn



6711

6721

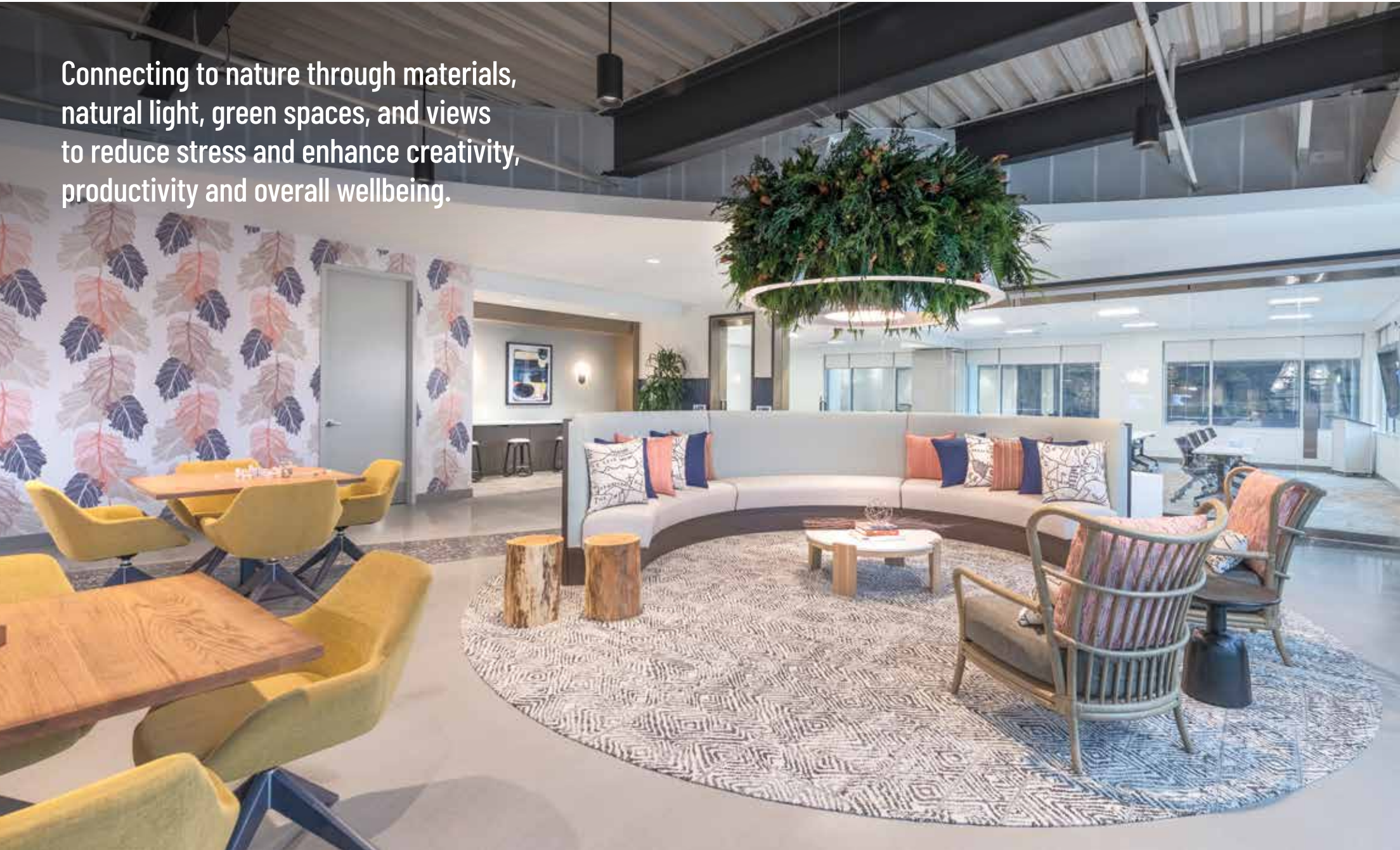
6731

COLUMBIA GATEWAY DRIVE

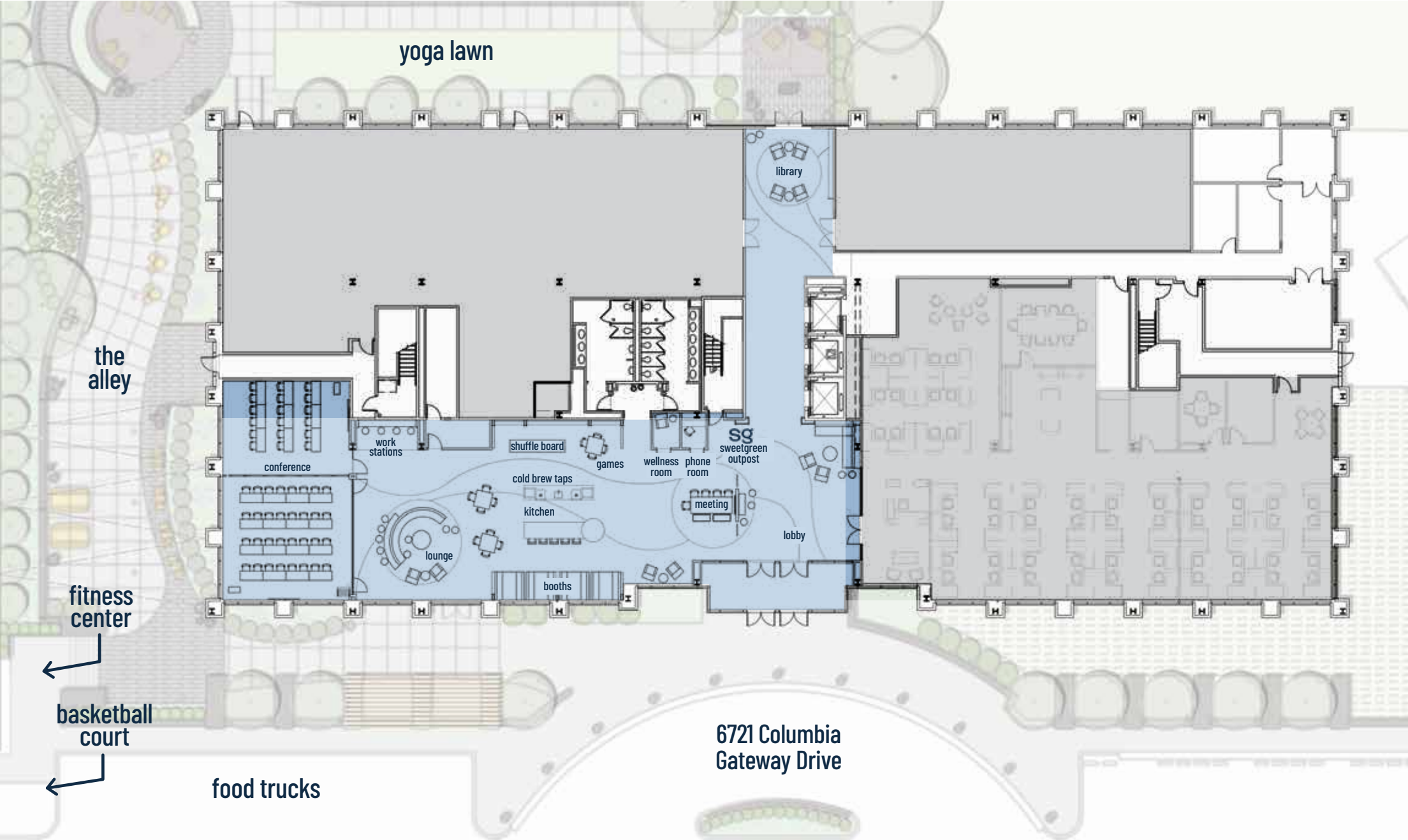
175

BIOPHILIC DESIGN

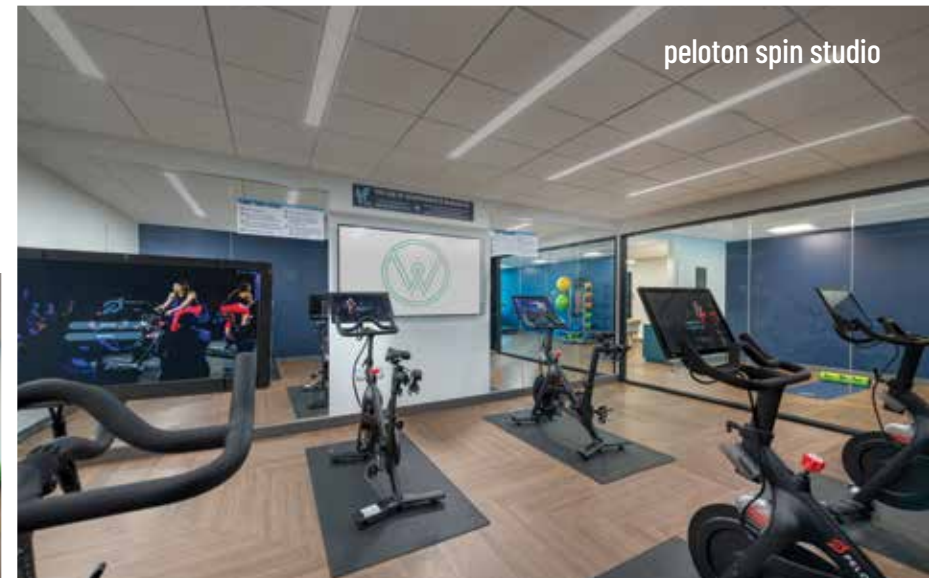
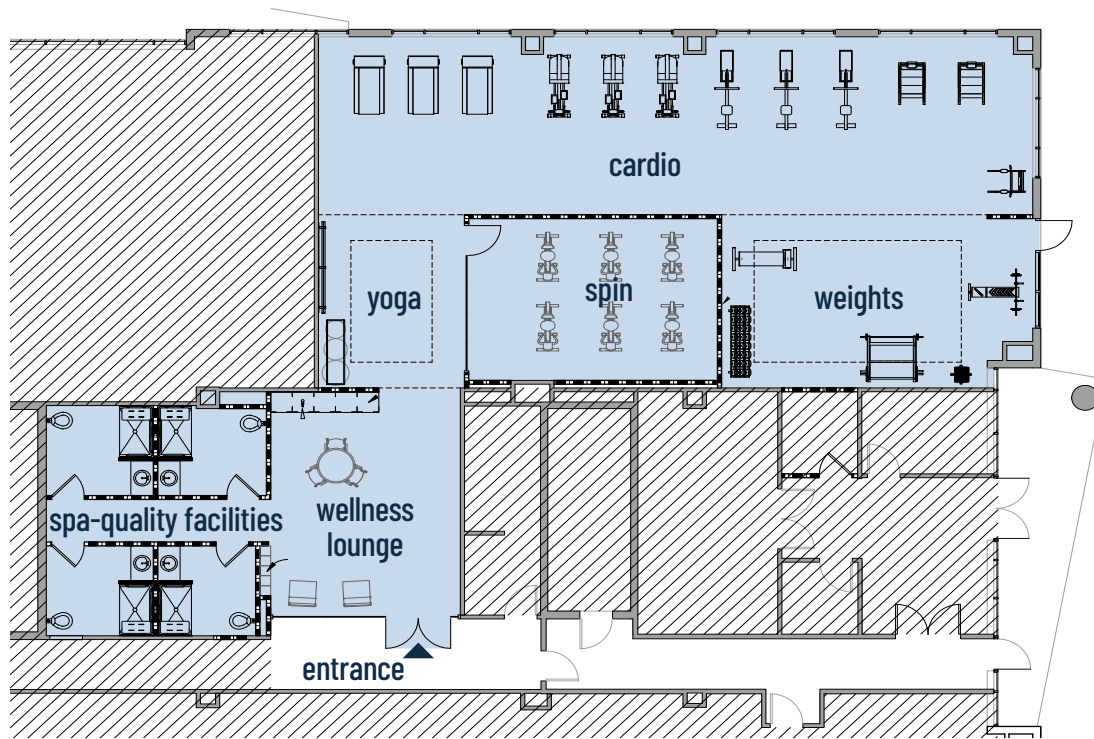
Connecting to nature through materials, natural light, green spaces, and views to reduce stress and enhance creativity, productivity and overall wellbeing.



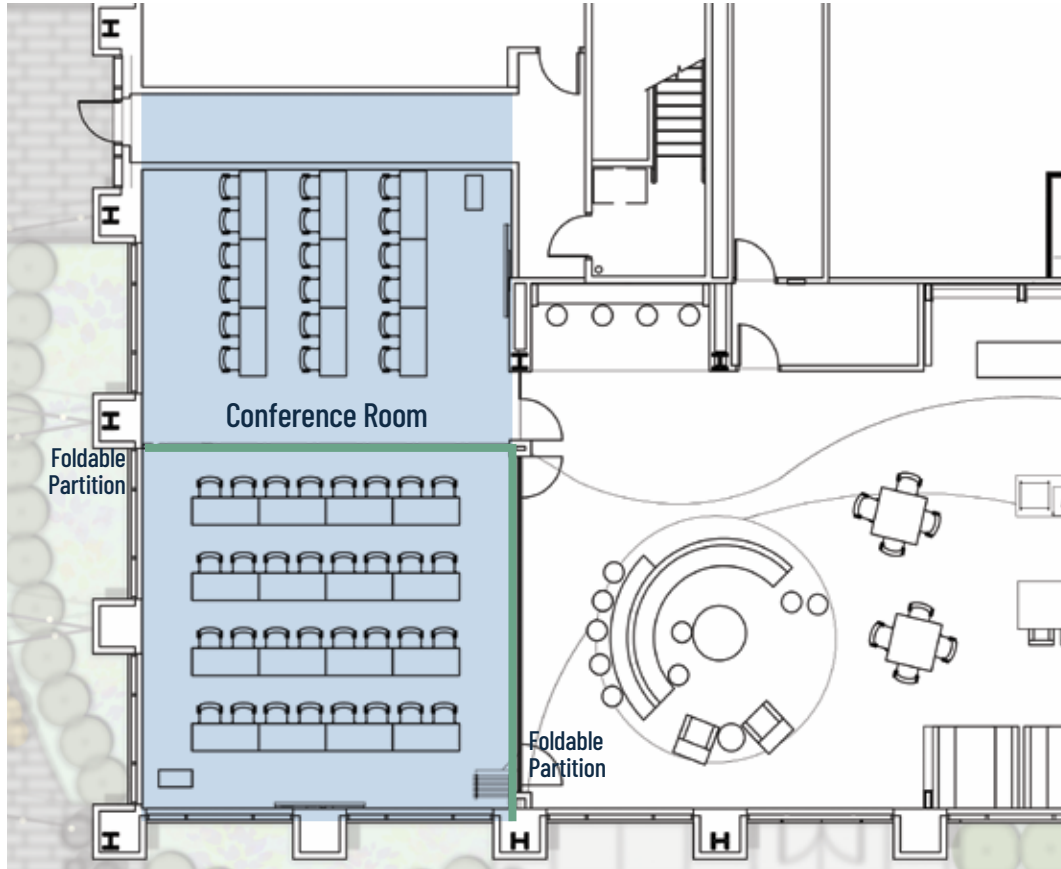
WAYLINE EXPERIENCE



SPA-QUALITY FITNESS CENTER



FLEXIBLE CONFERENCE ROOMS



- Combined 50+ person capacity
- Cisco Room Kit Plus with video conferencing
- 2 large format monitors

COMMUNITY KITCHEN WITH COFFEE, NITRO BREW + GAMES



A VARIETY OF COMMUNAL WORK + SOCIAL SPACES



LEASING

Krysta Herring

443.285.5709 | krysta.herring@copt.com

John Hermann

443.285.5711 | john.hermann@copt.com

